

## INSTRUCTIONS FOR IMPLEMENTING A NEW FLS VERSION

These instructions are to be used in situations where you need to re-start OCRIS data logging using a completely fresh database, which will be built from a file provided by Expedio or your administrator.

### EXPORT EXISTING DATA FROM 'OLD' DATABASE

First ensure that you export all existing data in your current OCRIS database.

Open OCRIS and export ALL available data via the 'Export to OXO' function for all 'logger definitions' (e.g. Drilling, Trenching and Point), including any records set as 'Held' – i.e. has 'H' in the 'Exported Status' field.

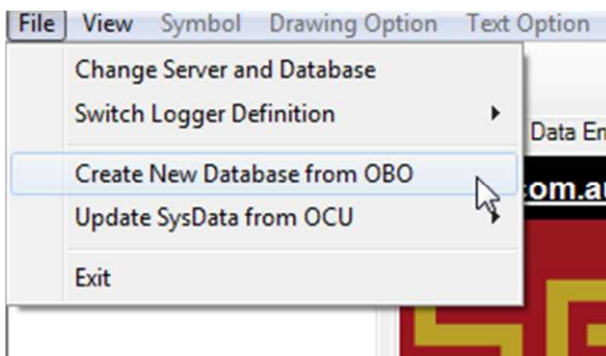
Any data set to 'H' in the 'Exported Status' fields will need to be reset to 'N' in order for that row to be exported via the OXO function.

Expedio recommends the user also exports all available data to 'CSV' format as well as an extra backup precaution.

### CREATE 'NEW' DATABASE

You will have been provided with a \*.OBO file which contains the new database definition. Save the \*.OBO file to a suitable location on your PC (e.g. your ..... \OCRISData folder).

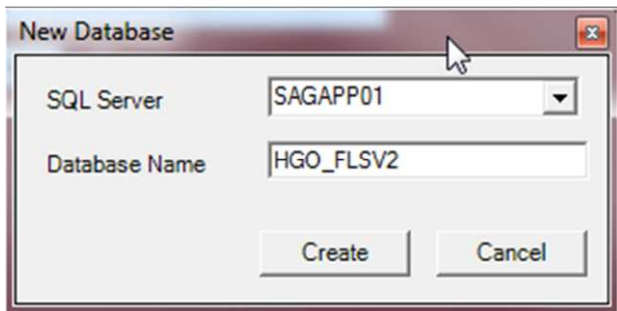
Open OCRIS and select the menu option: **'File – Create New Database from OBO'**



You will be prompted for the .OBO file location:

Navigate to the saved file 'XXXX.obo' and select 'Open'

Type in the new database name e.g. 'XXXX\_FLSV2' when prompted:



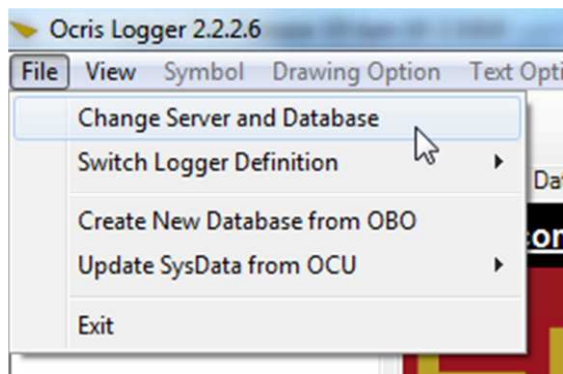
**NOTE:** In the example above, 'V2' in the database name identifies that this is the second version of the database. We recommend incorporating an appropriate version number into the name of any new database you create in this way.

OCRIS will build the new logging database and will then automatically restart.

## CONFIRM YOU ARE USING 'NEW' DATABASE

Check that OCRIS is attached to the newly created logging database.

Select from the menu 'File – Change Server and Database'



In the window that appears, the 'Database' name should read 'XXXX\_FLSV2' (i.e. the same as the Database name you specified in the previous step). Note, your 'SQL Server' name will be different to that shown in the screenshot below, yours will generally read something like '(local)\SQLExpress' or 'YourComputerName\SQLExpress'

If you encounter further problems, please contact Expedio using the contact details below, or by using the **OCRIS HELP > CUSTOMER FEEDBACK** menu option (this will send an email to Expedio support if your machine is connected to the internet).

w: [www.expedio.com.au](http://www.expedio.com.au)

e: [ocris@expedio.com.au](mailto:ocris@expedio.com.au)

t: (+618) 9486 7884

f: (+618) 9486 7885