

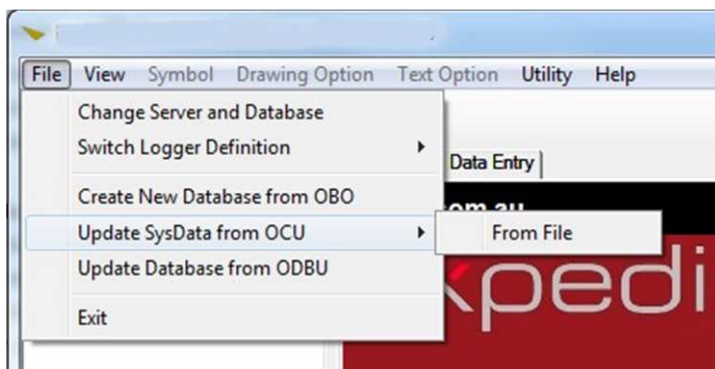
OCRIS – UPDATE CONFIGURATION FROM .OCU FILE

With OCRIS it is easy to update the Logging interface without affecting existing data. This is achieved via use of an .OCU file.

When there is a need to add more lookup values, fields or even an additional Worksheet, OCRIS can be re-configured via the OCRIS Admin application - from which an OCRIS update .OCU file will be created. The resulting OCU file will then be made available to users.

If you need to update the OCRIS Logger, click on menu item **FILE->UPDATE SYSDATA FROM OCU** and select the .OCU file that has been supplied to you.

The update will apply only to the Logger configuration and it will not modify existing data.



OCRIS will run through the update and will then automatically restart.

NOTE: While the configuration updates do not update existing data, there is always the possibility that a configuration change (such as changing a Column name or its definition) could impact on your Worksheet defaults or on the ability to export your data.

Therefore, it is important to perform a **FULL** export of the data before applying any configuration updates. In fact, OCRIS will check for any un-exported data before applying configuration updates, and will cancel the update process if any such data is found.

You can use the Data Summary view to check for yourself if any data remains unexported.

NOTE FOR ADMINISTRATORS

If you have OCRIS running on more than one PC, it is important to ensure that the .OCU updates are applied to ALL of your OCRIS installations.



If you encounter further problems, please contact Expedio using the contact details below, or by using the **OCRIS HELP > CUSTOMER FEEDBACK** menu option (this will send an email to Expedio support if your machine is connected to the internet).

w: www.expedio.com.au

e: ocris@expedio.com.au

t: (+618) 9486 7884

f: (+618) 9486 7885